



# THE KANSAS HAWKING CLUB

MAY, 2009

## CALENDAR

- June 13, 2009  
Walk with Wildlife,  
Great Plains Nature  
Center
- June 27, 2009  
Summer Picnic/  
Meet, Kinsch Home

### Notice

Don't forget that your 2009 dues can be paid at the picnic. \$10 per year.

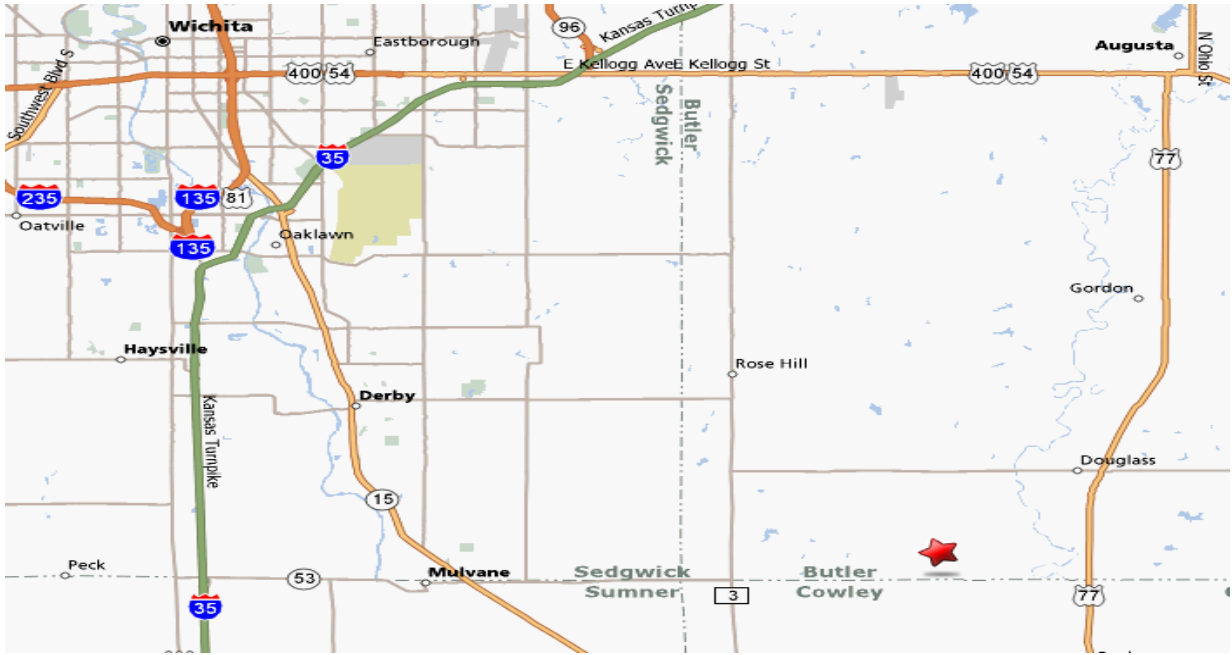
## SUMMER PICNIC/MEET

- This year, our Summer Picnic/Meet will be hosted by Tommy and Becky Kinsch, at the Lazy K Lodge, 23170 SW Tawakoni Rd, Douglas, KS.
- The club is going to provide the bar-b-que for everyone. Those with a last name beginning A-K, bring a salad or veggie side dish and those L-Z bring a dessert. Table service along with tea and water will be provided. Bring any other beverage of your choice.
- We will start gathering any time after 11:30am and will sit down to eat at 1:00pm sharp.
- Bring your birds.
- Please bring your lawn chairs.
- Don't forget to bring something for the raffle. We expect to have a great raffle this year to raise money for the club. We already have some donations from falconry companies so bring your checkbook. Tickets will be \$1 each or 6/\$5.
- We hope to have a hood making exhibit and possibly others, as we have new members.
- We will also have our regular business meeting so come to join in the discussions.
- MOST IMPORTANT! You MUST RSVP to Tommy Kinsch so we will know how much bar-b-que to order. Email [tommy@kinsch.com](mailto:tommy@kinsch.com) or call (316)747-3113.

## WALK WITH WILDLIFE

This year's Walk with Wildlife Event will be on June 13, 2009 at the Great Plains Nature Center in Wichita. This is the 25th anniversary of the event so it looks to be a great event. If you wish to participate, please contact Vanessa Avara at [prairiewind56@aim.com](mailto:prairiewind56@aim.com) or (316) 990-1919. See you there!

# PICNIC/MEET LOCATION



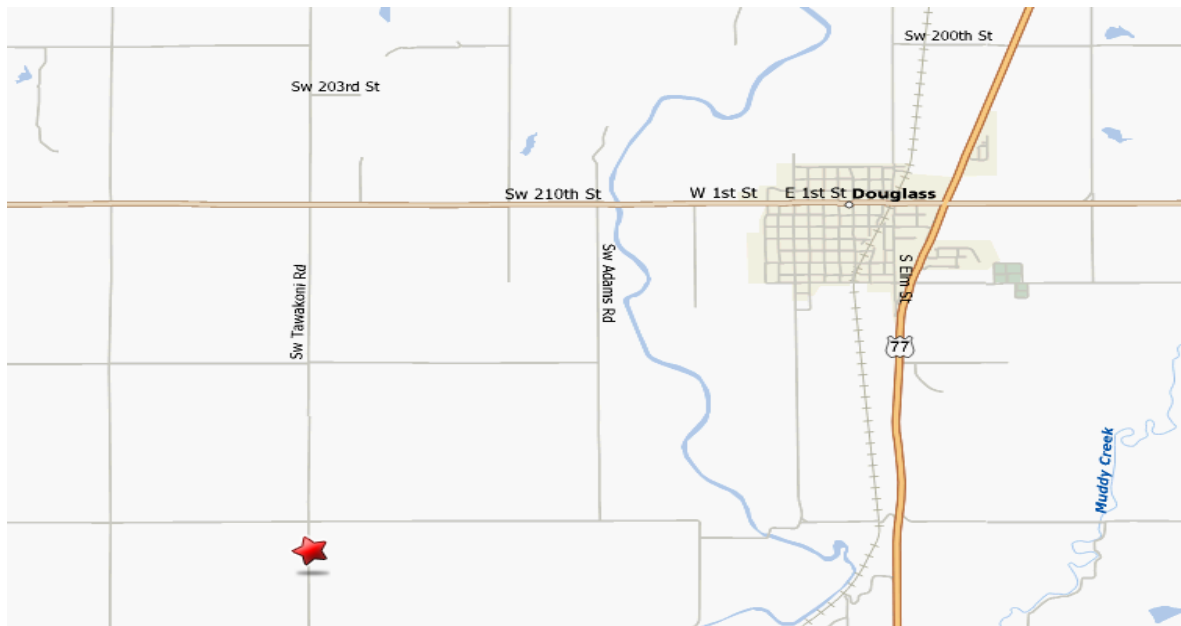
From Wichita, travel east on US54/400. You can turn south on Rock Rd for 11 miles to 95th St. S and then go 10 miles east to Tawakoni Rd. Then go 2.25 miles south to the Lazy K Lodge. (Note: not clear on map—95th/210th goes all the way from K15 to Douglass)

OR, take Butler Rd south out of Andover 11 miles to 210th south. Turn east for 4 miles to Tawakoni Rd then south.

OR, take Santa Fe Lake Rd south off US400 to 210th S. Turn west 1.5 miles to Tawakoni Rd, then south.

Or, take US 77 out of Augusta south to 210th in Douglass and turn west to Tawakoni Rd.

Note: 95th St S in Sedgwick Cty is the same as 210th S in Butler Cty.



For help, call (316)747-3113